



PRESERVATION OF RURAL COMMUNITY CHARACTER & INFILL POLICY REVIEW

VISIONING WORKSHOP | October 11, 2017



INTRODUCTION



VISIONING WORKSHOP AGENDA



STUDY PURPOSE



STUDY PROCESS



STUDY AREAS



PRINCIPLES & OBJECTIVES



PURPOSE OF VISIONING WORKSHOP



QUESTIONS / CONTACT INFO

6:30 PM

Visioning Workshop Begins

6:45 PM

Formal Presentation

7:00 PM

Questions & General Discussion

7:15 PM

Workshop Activities Begin

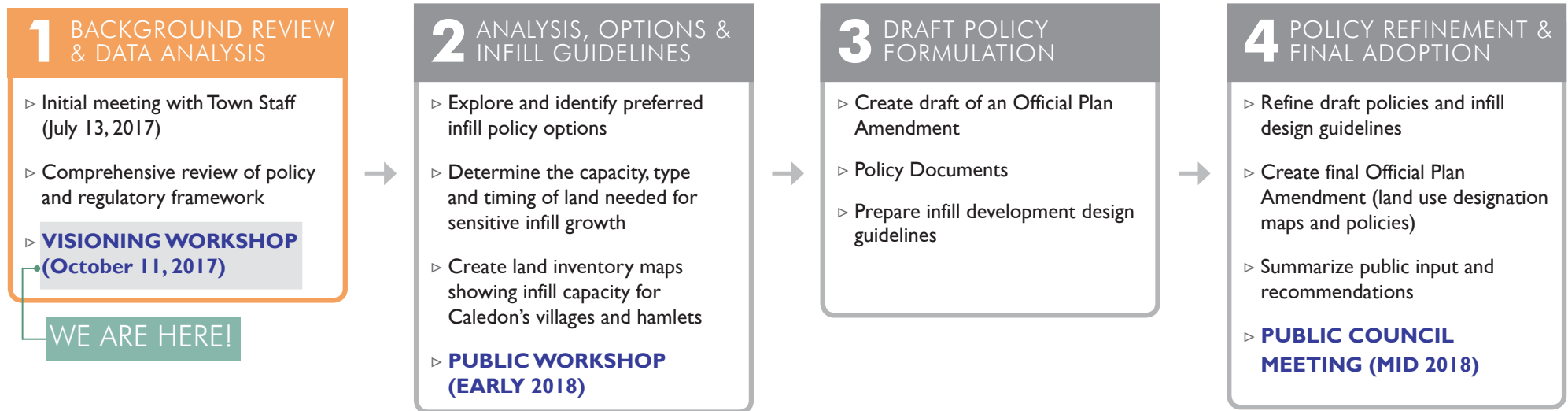
9:00 PM

Visioning Workshop Concludes

The Town of Caledon recognizes the *unique and diverse history* of each of its *communities* and favours a mix of thriving interconnected settlement areas.



Study Purpose: To *protect and enhance the valued aspects of the Town's communities* in a manner that allows for sensitive growth and infill development.



RURAL SERVICE CENTRE

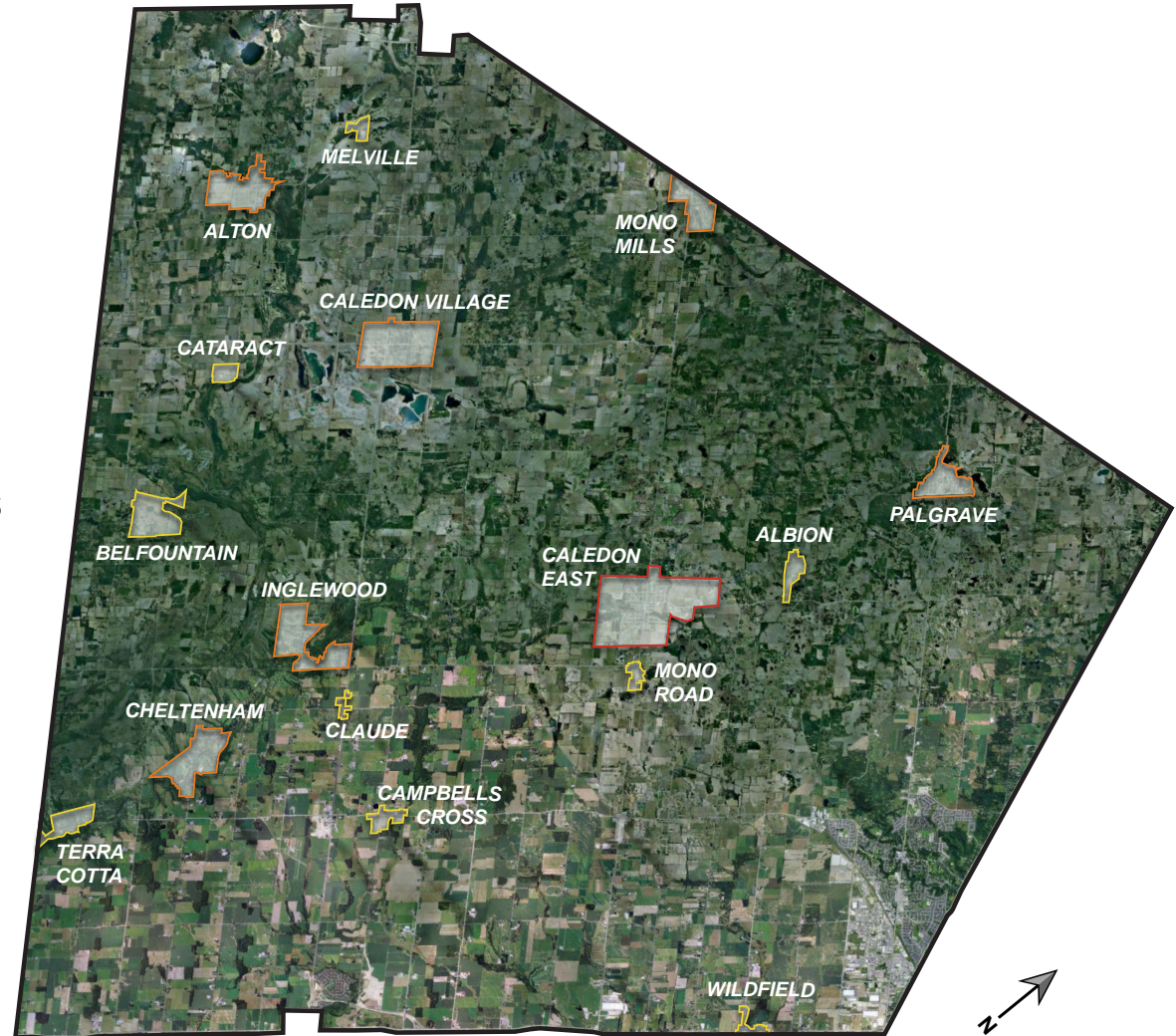
- ▷ Caledon East

VILLAGES

- ▷ Alton
- ▷ Caledon Village
- ▷ Cheltenham
- ▷ Inglewood
- ▷ Mono Mills
- ▷ Palgrave

HAMLETS

- ▷ Albion
- ▷ Belfountain
- ▷ Campbell's Cross
- ▷ Cataract
- ▷ Claude
- ▷ Melville
- ▷ Mono Road
- ▷ Terra Cotta
- ▷ Wildfield



 STUDY AREAS

1

Compatibility with and preservation of established neighbourhood character

2

Maintain or improve vitality and wellbeing of core areas

3

Promote compact, attractive main streets and streetscapes

4

Preserve views, significant landscapes, and cultural and natural heritage

5

Promote pedestrian-oriented development

6

Promote high quality architecture and urban design

7

Promote connected development

8

Promote innovation and environmental sustainability

1. COMPATIBILITY WITH AND PRESERVATION OF ESTABLISHED NEIGHBOURHOOD CHARACTER



2. MAINTAIN OR IMPROVE VITALITY AND WELLBEING OF VILLAGE / HAMLET CORES



3. PROMOTE COMPACT, ATTRACTIVE MAIN STREETS AND STREETSCAPES



4. PRESERVE VIEWS, SIGNIFICANT LANDSCAPES, AND CULTURAL AND NATURAL HERITAGE



5. PROMOTE PEDESTRIAN-ORIENTED DEVELOPMENT



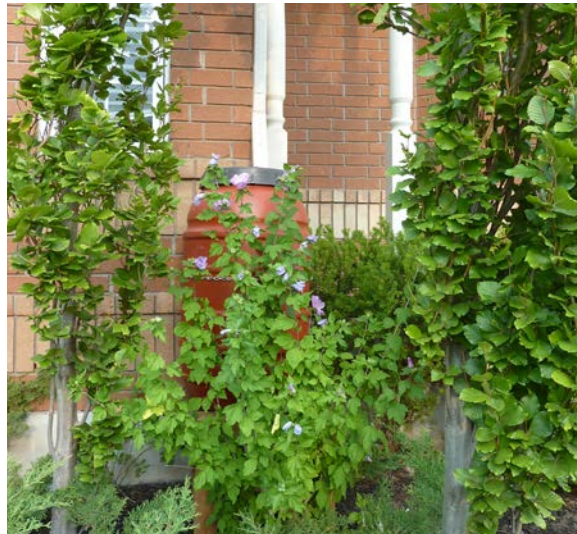
6. PROMOTE HIGH QUALITY ARCHITECTURE AND URBAN DESIGN



7. PROMOTE CONNECTED DEVELOPMENT



8. PROMOTE INNOVATION AND ENVIRONMENTAL SUSTAINABILITY





Share the purpose, process, and principles of the study



Identify valued qualities and characteristics of the study areas



Collect valuable insight from residents



Discuss concerns involving infill development and community character



Explore desirable infill development examples that promote and enhance community character



Present future public engagement opportunities

For further information, please contact:

Margherita Bialy

Community Planner, Policy
Policy and Sustainability
6311 Old Church Road, Caledon East

Telephone: 905.584.2272 x.4049
Email: margherita.bialy@caledon.ca



PRESERVATION OF RURAL COMMUNITY CHARACTER & INFILL POLICY REVIEW

VISIONING WORKSHOP | October 11, 2017